

Diminished scale idea / pattern #7

Artem Zhulyev

B7b9 D7b9 F7b9 Ab7b9
C dim Eb dim F# dim A dim

The image displays seven staves of musical notation for a diminished scale idea in 4/4 time. The notation is written in treble clef. The first staff begins with a 4/4 time signature. The scale is presented in four different positions across the staves, each starting on a different note: C, Eb, F#, and A. The notes are connected by beams, and accidentals (sharps and flats) are used to indicate the specific notes of the diminished scale. The sequence of notes in each position is: C, Bb, Ab, G, F, Eb, D, C. The staves are arranged vertically, showing the scale moving up and then down across the range of the instrument.

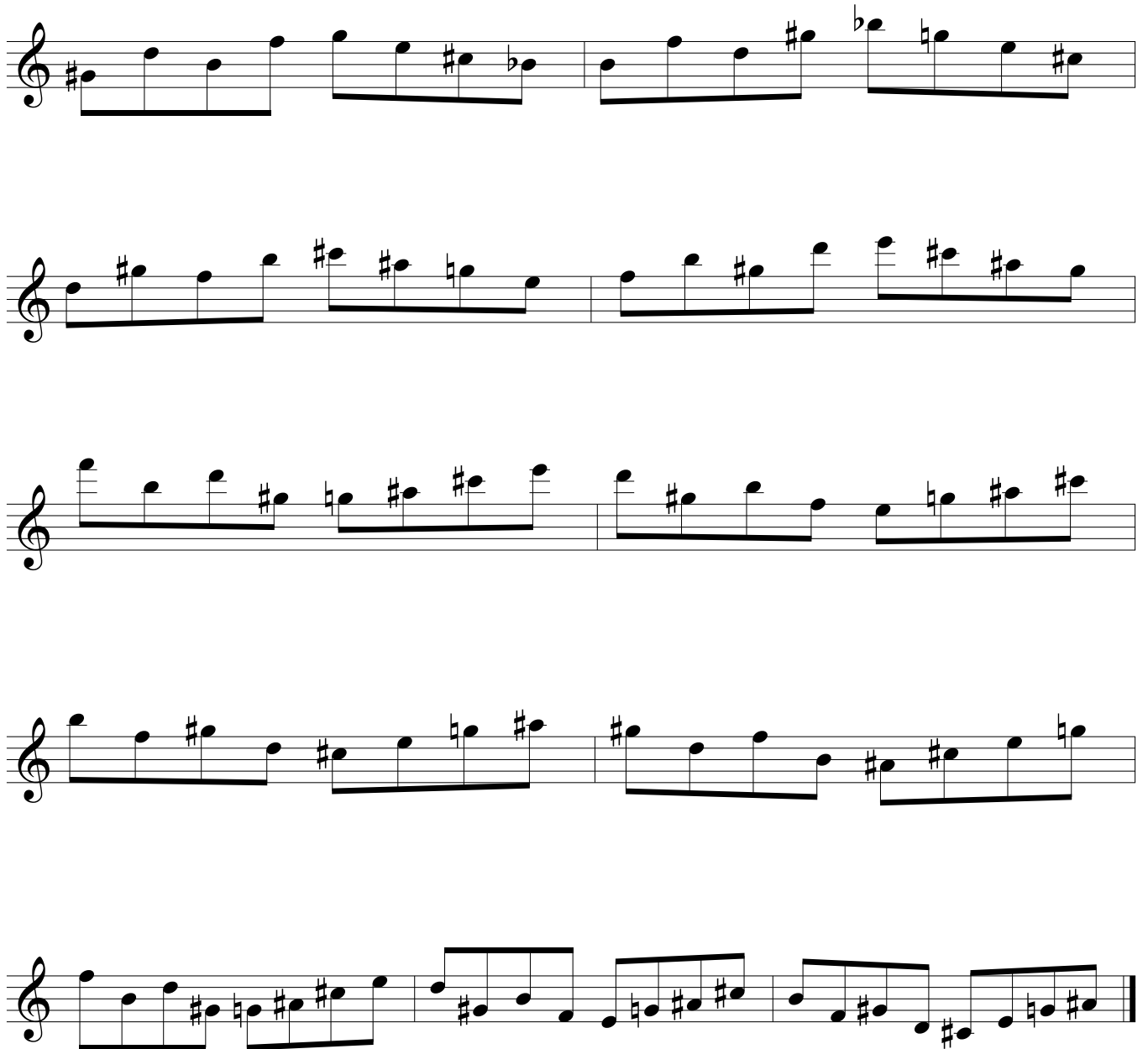
Diminished scale pattern #7

2 C7b9 Eb7b9 F#7b9 A7b9
C#dim Edim Gdim Bbdim

The first sequence consists of seven staves of music, each containing a diminished scale pattern. The scales are: C#dim (C#-D-E-F-G-A-B), Edim (E-F-G-A-B-C), Gdim (G-A-B-C-D-E-F), Bbdim (Bb-C-D-E-F-G), C#dim (C#-D-E-F-G-A-B), Edim (E-F-G-A-B-C), and Gdim (G-A-B-C-D-E-F). The notation uses treble clefs and includes various accidentals (sharps, flats, naturals) to define the notes of each scale.

Db7b9 E7b9 G7b9 Bb7b9
Ddim Fdim G#dim Bbdim

The second sequence consists of one staff of music containing a diminished scale pattern. The scale is Ddim (D-E-F-G-A-B). The notation uses a treble clef and includes various accidentals (sharps, flats, naturals) to define the notes of the scale.



Remember!!! we love to hear you playing our tunes!!! so don't be shy!!!
and send up a link with your performance to share with our community.

You can do it !!!

click the link below to enter our music store:

<https://jazzsaxophonelessons.com/shop/>

Our YouTube:

<https://www.youtube.com/channel/UCLDgqfiDrYqBjh2EHDGZpZA>